





LIFE

EASY
CLEAN

LIFE is a leather that takes durability and maximum hygiene to the next level. LIFE has a Martindale value of $\geq 500,000$ cycles, is antiviral, antibacterial and anti-mite thanks to permanent treatment, and is stain and water resistant. LIFE is also USDA-certified leather and meets the strict standards of both OEKO-TEX and the Leather Working Group.

 Wildeman
 van Leeuwen



-  **Martindale ≥ 500.000 cycles**
-  **USDA, OEKO-TEX & Leather Working Group certified**
-  **Antiviral, antibacterial & anti-mite**
-  **Stain and water resistant**



Product code

FL-611099



1814
Peony



1808
Milk



1816
Flint



1809
Snow



1807
Gravel



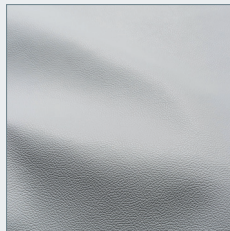
1801
Sand



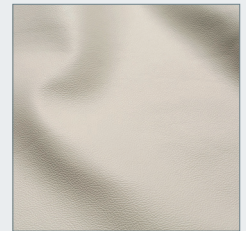
1818
Taupe



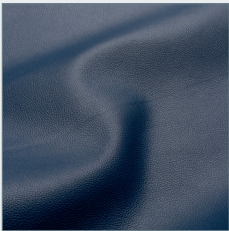
1824
Sky



1806
Mist



1802
Pearl



1840
Cosmic



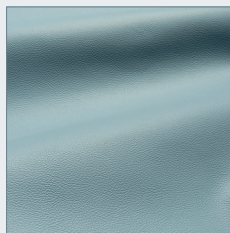
1826
Cobalt



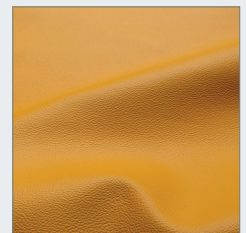
1817
Pewter



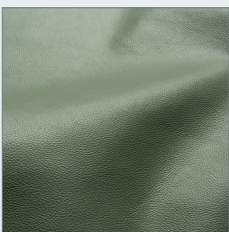
1804
Buff



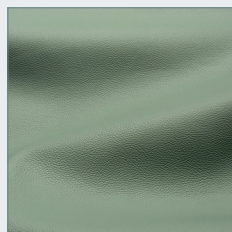
1823
Azure



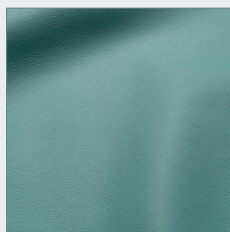
1819
Pumpkin



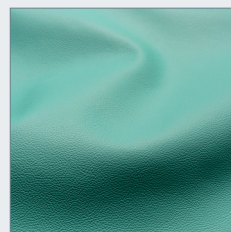
1822
Olive



1820
Sage



1821
Teal



1841
Sakarun



1803
Tan



1805
Peanut



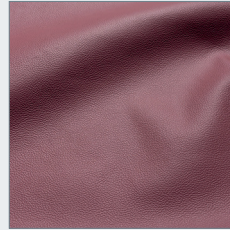
1815
Mauve



1812
Peach



1828
Clay



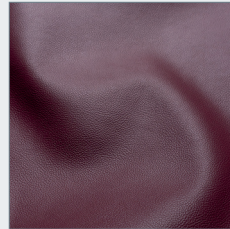
1813
Pomegranate



1836
Garnet



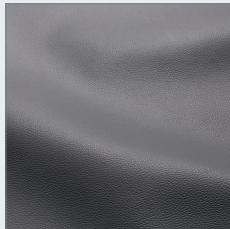
1811
Mud



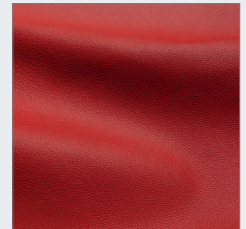
1834
Cherry



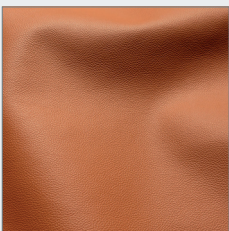
1835
Raspberry



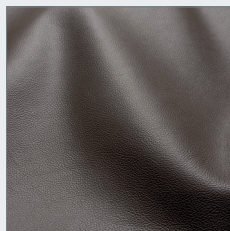
1831
Ash



1810
Scarlet



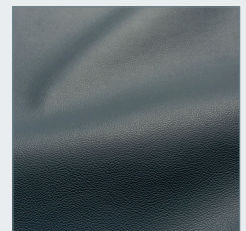
1837
Coral



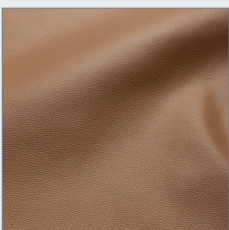
1833
Coffee



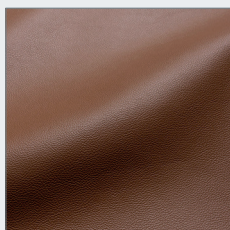
1827
Umber



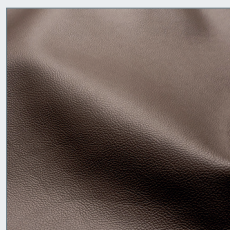
1825
Horizon



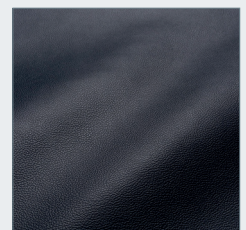
1838
Toffe



1839
Hazelnut



1832
Chocolate



1829
Black